

# H&R AGRI-POWER

THE **POWER** TO GET YOU **MORE**

# PRECISION FARMING SOLUTIONS



HOPKINSVILLE, KY <b>270-886-3918</b>	RUSSELLVILLE, KY <b>270-726-4545</b>	OWENSBORO, KY <b>270-926-2627</b>	MORGANFIELD, KY <b>270-389-1424</b>	MAYFIELD, KY <b>270-247-4747</b>	VERGENNES, IL <b>618-684-4818</b>
LAWRENCEBURG, TN <b>931-762-2568</b>	FAYETTEVILLE, TN <b>931-433-3516</b>	TANNER, AL <b>256-232-9115</b>	UNION CITY, TN <b>731-885-1440</b>	BROWNSVILLE, TN <b>731-772-0551</b>	SOMERVILLE, TN <b>901-465-3573</b>

[www.hragripower.com](http://www.hragripower.com)



# Advanced Farming Specialists



**Front Row:** Duncan McKinnie,  
Ben Harriss

**Back Row:** Jon Beene, Sam  
Smith, Heath Conklin, Jamey  
Guinn, Jason Moore, Matt  
Logeman and Nick Rust

***Our Team Is Still Growing To Serve Your Needs!***

## **THE POWER TO DO MORE WITH PRECISION FARMING!**

At H&R Agri-Power we believe that precision farming should give you more capability, less complexity and 24/7/365 support through the season from people who care about keeping you rolling. That's why we offer a total farm solution with Case IH Advanced Farming Systems® (AFS) – including the very best equipment guidance systems in the industry backed by the best service.

## **OPTIMIZE YOUR FARM WITH PEOPLE YOU TRUST**

Whether you're evaluating AFS for the first time or ready to move up to the next level, H&R Agri-Power's AFS certified sales specialists will help you select the best precision farming solution for your operation at a price you can afford.

## **H&R AGRI-POWER IS YOUR AFS CERTIFIED DEALER**

As a Case IH AFS Certified Dealer we have invested in our showrooms, service and support systems to offer you the best possible experience with precision solutions for your farm. We have AFS certified sales specialists on staff to assist you with optimizing your farm.



**H&R AGRI-POWER**  
THE **POWER** TO GET YOU **MORE**





# H&R Agri-Power Helps You Put It All Together

## RECEIVERS

Innovative precision farming technologies, like the new Case IH AFS 372 GNSS receiver, delivers intuitive technology and ensures maximum uptime.



## DISPLAYS

With an AFS Pro 700 display you can count on a single intuitive interface to connect with all your equipment and monitor your performance, even with mixed fleets. Move it from vehicle to vehicle to spread the investment across your entire operation.



## SECTION & RATE CONTROL

AFS section and rate control lets you put seed, fertilizer and other inputs where you want them and only where you want them. Reduced overlaps and more precise placement allow you to save on inputs, improve agronomic performance and lower overall costs.

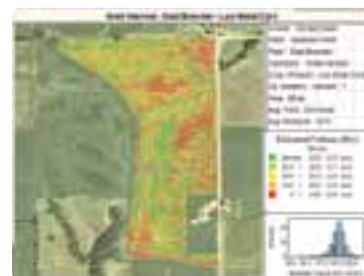


## COMPLETE PRECISION FARMING SOLUTIONS

H&R Agri-Power gives you a complete offering of precision technologies to improve your productivity and agronomic performance while minimizing input costs and managing your risk.

## HARVEST

Harvest time is your one and only shot to monitor, map and evaluate data about your crops' performance – AFS harvest monitoring and mapping tools deliver on all your needs.



## GUIDANCE & STEERING

With steering and guidance tools for tractors, combines and sprayers, you can achieve year-to-year repeatable accuracy from sub-inch levels and beyond.



## SOFTWARE

Designed to fit your operation's needs, AFS® desktop software offers the flexibility and analysis power to support all your precision farming needs.





# Tillage Solutions

## How We Can Save You More!

H&R Agri-Power's AFS solutions are designed to help you farm better and smarter all year, no matter what crops you grow or where you grow them. And when it comes to tillage solutions, precision guidance and steering equipment are no longer luxury items. By adopting auto guidance, you will reduce skips and overlaps; save on fuel and labor costs; simplify operation; and even add hours to the day during critical operating windows. Let us help you find the perfect solution for your vertical and horizontal tillage needs.

### AFS ACCUGUIDE GUIDANCE SYSTEM

- ✓ Provides year-to-year repeatable accuracy, as tight as plus or minus 1 inch (2.5 cm).
- ✓ Increases your speed and efficiency with fully integrated, hands-free steering.
- ✓ Minimizes skips and overlaps and maintains perfectly straight, repeatable rows.

### VOICES FROM THE FIELD

"Using the Case IH auto guidance with our tillage tools saves us a world of time and quite a bit of fuel. The operator can sit in the seat and watch the tool work instead of trying to keep from overlapping – that makes it a lot easier. Using auto guidance with our tillage tools equals less time, less fuel, and a lot less operator fatigue."

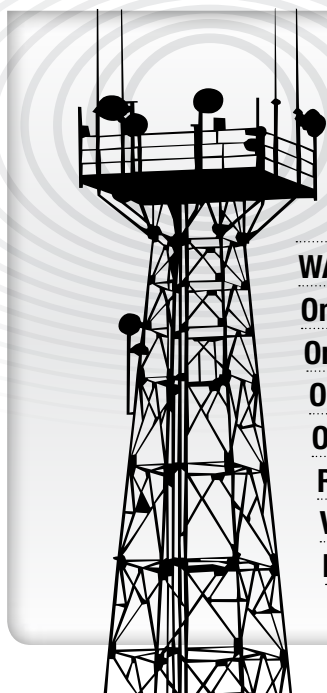
**Brandon Moore**  
Moore Farms – Humboldt, TN



## What Kind of Accuracy Do You Need?

*Cellular RTK gives H&R Agri-Power the ability to deliver sub-inch accuracy for less money!*

WAAS	6 – 8 in. pass-to-pass, Sub-meter repeatable
OmniSTAR® VBS	6 – 8 in. pass-to-pass, 20 in. repeatable
OmniSTAR XP	3 – 5 in. pass-to-pass, 6 in. repeatable
OmniSTAR G2	3 – 5 in. pass-to-pass, 6 in. repeatable
OmniSTAR HP	2 – 4 in. pass-to-pass, 4 in. repeatable
RTX™	1.5 in. pass-to-pass, 1.5 in. repeatable
VRST™	1 in. pass-to-pass, 1 in. repeatable
RTK	1 in. pass-to-pass, 1 in. repeatable



# Steering Systems

## EZ-PILOT™

High-accuracy steering at an affordable price.

- ✓ Integrates directly into the steering column for clear access to cab control
- ✓ Allows for unrestricted manual steering when assisted steering is not engaged
- ✓ Compatible with many different vehicle types



## EZ-STEER™

Provides simple, portable, hands-free farming for more than 1200 vehicle models.

- ✓ Quick disengagement when you manually turn the steering wheel
- ✓ The EZ-Steer system motor easily locks away from the steering wheel when not in use
- ✓ Easy installation and transferability from vehicle to vehicle



## AUTOPILOT™

Can be retrofitted to many makes and models of machines. Using the machine's electro-hydraulic circuit to provide automatic guidance, this retrofit solution will significantly increase your efficiency during field preparation by allowing you to drive more accurately and consistently during extended periods behind the wheel.

- ✓ Provides year-to-year repeatable accuracy, as tight as plus or minus 1 inch (2.5 cm)
- ✓ Increases your speed and efficiency with fully integrated, hands-free steering
- ✓ Minimizes skips and overlaps and maintains perfectly straight, repeatable rows



## ONTRAC2+™

Affordable steering without hooking into hydraulics.

- ✓ Quick, easy "Lock-n-Roll" installation
- ✓ Easily transfer between vehicles
- ✓ Superior to friction-design steering systems – eliminates slippage



### WHAT IS OVERLAP COSTING YOU?

Use the ROI Accuracy Calculator at [www.putyourfarmonthemap.com](http://www.putyourfarmonthemap.com)





# Planting Solutions

## Less Waste, More Profit

**W**ith an AFS section and rate control solution from H&R Agri-Power, you can make precision planting a profitable reality on your farm. In addition to controlling where and how much of each type of seed you plant, you'll be able to put fertilizer and other inputs where you want them and only where you want them. Reduced overlaps and more precise placement allow you to save on inputs, improve agronomic performance and lower overall costs.



### AFS ACCUCONTROL PHASE 1

AccuControl rate controller technology minimizes the need for multiple displays in the cab and when used in conjunction with an AFS Pro 700 display, you can:

- ✓ Vary sprayer, spreader, planter and seeder rates
- ✓ Turn implement sections, including non-Case IH implements, on and off for improved efficiency



### TRU-COUNT ROW CLUTCHES

Tru-Count offers planter shutoff clutches for Kinze, Deere, Case IH, or White.

- ✓ No more reduced yield due to over planting
- ✓ No wasted seed in the spring
- ✓ Save money every year



### AGGPS TRUEGUIDE IMPLEMENT GUIDANCE SYSTEM

- ✓ The TrueGuide™ system is a “passive” guidance system that controls the implement. It uses the AgGPS® Autopilot™ automated steering system to move the tractor and keep the implement on line.
- ✓ The working implement behind the tractor is where precision counts, and the only way to directly influence the implement is to measure where it is and control it.
- ✓ Adding the TrueGuide system to the Autopilot system typically reduces the uncontrolled drift of the implement by more than 50% over guiding the tractor alone.

### FIELD IQ

The Field-IQ crop input control system is a modular, section control and variable rate application control system that is compatible with the FM1000 and FM 750 integrated display. Expand as you grow!

- ✓ Prevent seed overlap with Field-IQ section control and Tru Count clutches
- ✓ Vary seed population in your field with Field-IQ variable rate control and Rawson Drives



**Use Your Autopilot System To Guide Your Implement Toward Savings**  
Simple to Install and Use





## SEEDCOMMAND™

Helps you manage all of your planting operations, including seed population, planter performance, hybrid/variety mapping, split planting and variable rates.

- ✓ Lower seed costs by eliminating double planting at end rows, point rows and around terraces.
- ✓ Makes following the row at harvest easier on end/point rows.
- ✓ Prevents yield loss due to lodging and nutrient competition in double-planted areas.
- ✓ Improves planting productivity by eliminating the need to slow down to accurately raise/lower the planter at end rows.

## SURESTOP® CLUTCHES

Start and stop seed flow and control planter sections row-by-row, allowing SeedCommand™ to automatically turn planter row units on/off based on your planting map.

- ✓ No need to remove planter drill shaft to install or repair
- ✓ Electric clutches means no air compressor is required



**Ag Leader**  
Technology



***"I run a red tractor and a green planter. Up until this year I had to have 2 monitors in my tractor to run the steering and planter controls. My AFS specialist showed me how to do both functions through one display, the Pro 700."***

**Butch Ladd**, Brownsville Territory







# Application Solutions

From flow control valves and spot spray products to a full system that performs variable rate application and automatic section control, H&R Agri-Power flow and application control solutions can help you increase yields and save on input costs for granular fertilizer, liquid, or anhydrous ammonia.

AFS application control is standard equipment on Patriot® Sprayers and Titan™ Floaters.

## PATRIOT SPRAYERS

- ✓ **AccuBoom Automatic Boom Section Control** – Automatically turn off appropriate boom sections when the sprayer enters an area where product has already been applied, and automatically turn them back on when leaving a pre-applied area.
- ✓ **As-Applied Mapping** – Automatically record and map where you've applied inputs. In addition, track products used and their attributes, such as mixture, manufacturer information, EPA numbers and more, to simplify and improve record keeping and input tracking.
- ✓ **Variable Rate Control** – Adjust Patriot application rates manually or by using a prescription created with AFS software. Use prescription variable-rate application maps to apply more – or less – chemical or fertilizer to areas as needed to improve yields and save money with a more precise application.

## AIM COMMAND® SPRAY SYSTEM

Using pulse width modulation (PWM) and computer technology to manage flow and droplet size specific to various chemicals, AIM Command lets you toggle between two preset pressures that are independent of field speed and product rates. That means:

- ✓ Better chemical performance and utilization
- ✓ Consistent application patterns
- ✓ No more pattern losses in turns, corners and on hills
- ✓ Instant off/on control
- ✓ Fewer opportunities for operator error
- ✓ More time applying, increased average speeds



## PINPOINT® SPRAY SYSTEM

PinPoint provides extreme pinpoint accuracy and dramatic gains in sprayer efficiency. By combining Capstan Ag's patented blended Pulse-Width Modulation technology with an individual nozzle control solution, PinPoint offers extreme application control in a wide range of conditions.



## TOTAL CONTROL SPRAY HEIGHT CONTROL

- ✓ UC4 Precision Control with Ultrasonic Technology
- ✓ Give your equipment the ability to automatically react to changes in field terrain with the flip of a switch
- ✓ Uses ultrasonic sensors mounted on the booms to automatically maintain a preset height above the ground or crop



## VOICES FROM THE FIELD

"I like how the Aim Command allows me to maintain constant pressure and constant volume when spraying, no matter how fast I'm spraying. This is great for windy conditions when I need lower pressures. We also do variable rate application of nitrogen with the sprayer using information we collect from combine yield maps and soil sampling. Using section control helps us save money by not over applying in the headlands."

**Jeremy & JP Robertson, Russellville Territory**







ions



## GreenSeeker®

Variable Rate Application and Mapping Systems

The GreenSeeker RT200 nitrogen application system offers a more efficient and precise way to manage crop inputs such as nitrogen.

The technology allows you to apply the right amount, in the right place, at the right time in real-time. Profits increase by an average \$15 per acre.



*Manage Your Nitrogen And Maximize Your Profits!*

## FIELD-IQ

Automated boom switching and liquid rate controller that makes liquid application simple and easy.



- ✓ Provides an economical approach to automatic boom section control
- ✓ System automatically turns up to 10 individual boom sections on and off based on already applied areas
- ✓ This provides more accurate application around point rows, waterways, and field boundaries where over-application is most likely to occur
- ✓ Skips and overlaps will no longer be a concern
- ✓ Save input cost, reduce operator fatigue, and improve overall application accuracy
- ✓ Get your soil in shape while spreading or strip tilling with the Field-IQ section and variable rate control
- ✓ Vary rate of fertilizer or lime using a prescription map, Field-IQ variable rate control and Rawson Drives

## AFS ACCUCONTROL

AFS AccuControl minimizes the need for multiple displays in the cab. Using AFS AccuControl rate controller technology in conjunction with an AFS Pro 700 display, you can:



- ✓ Vary sprayer, spreader, planter and seeder rates
- ✓ Turn implement sections, including non-Case IH implements, on and off for improved efficiency
- ✓ Activate coverage logging on the display with the optional master switch box, with the foot switch or with the implement switch to keep records of varieties and/or rates applied
- ✓ Use Rawson drives for variable rate seeding (four different rates) and control up to two liquid products and vary the rate of each

## DIRECTCOMMAND™

Offers complete control over liquid or granular applications while at the same time logging data and providing real-time application mapping capabilities.



- ✓ Lower application costs by eliminating product waste caused by overlap
- ✓ Reduce skips caused by manual controls
- ✓ Lessen crop damage potential from over-application
- ✓ Reduce operator fatigue
- ✓ Allows operator to monitor other functions





# Harvest Solutions

**H**arvest time is your one and only shot to monitor, map and evaluate data about your crops' performance. You need intuitive solutions that are ready to go when you are to gather crop information for your records. You want the ability to immediately analyze the performance of different seed varieties. And, most importantly, you require a system and support team designed to fit the way you farm. H&R Agri-Power delivers AFS harvest monitoring and mapping tools for all your needs.

## YIELD MONITORING

Ag Leader provides the most widely-used grain monitoring technology in the world. Only Ag Leader provides yield monitoring for nearly all combines made in the last 25 years.



- ✓ More accurate yield data
- ✓ On-the-go yield comparisons
- ✓ Better hybrid/variety selections
- ✓ Make storage decisions based on moisture readings in the field
- ✓ In-depth performance analysis



## AFS ROWGUIDE™

Two mechanical touch sensors, mounted on the corn head dividers, sense row position, and together with the GPS signal, provide guidance input.



With the help of these sensors and autoguidance technology, AFS RowGuide helps increase productivity at harvest and reduces operator fatigue. You can maintain high productivity in tight contours and curves and ensure constant crop feeding. In addition, there's no need to count rows, as the system lays out field passes.

- ✓ **Follow Rows Hands-Free** – With RowGuide active, your header remains centered above the crop without manual intervention. This is particularly helpful in difficult situations such as low light or downed corn.
- ✓ **Seamless Synchronization** – When a corn row is not detected due to planter skips, waterways or sprayer/side dress application overruns, the AFS RowGuide and AFS AccuGuide autoguidance synchronize seamlessly to keep you on track.







## HEADSIGHT® HEIGHT CONTROL SYSTEMS

Headsight Sensors are the best performing height control systems available today, providing superior protection for your header with accuracy, reliability and ease of use.



- ✓ Horizon™ – offers the most advanced header control and diagnostics at your finger tips
- ✓ Insight – single controller that offers solutions to all header control needs.
- ✓ Foresight Option – improves header control near ground
- ✓ Integrates with existing combine height and tilt circuits
- ✓ Accurate long lasting patented height sensors
- ✓ Includes 3-year parts warranty
- ✓ All sensors (up to 5) independently control height
- ✓ Works with most combines made in the last 30 year



### BACK VIEW

- A Down Pressure Spring** – Keeps sensor on ground even at higher operating speeds
- B Oil Impregnated Bushing** – Never needs greasing
- C Reverse Spring Trip** – Allows sensing arm to flip forward if operator reverses the combine
- D Flexible Poly Arm** – Allows sensing arm to flex which absorbs most of the shock and abuse in the field

### SIDE VIEW

- E All Stainless Steel Construction**
- F Hall Effect Sensor** – Uses a magnetic field to sense rotational angle
- G Forward Sensing** – The curved shape of the arm moves the sensing point forward as sensor nears the ground

## TRIMBLE® YIELD MONITORING

With Trimble® Yield Monitoring, you can accurately collect the yield and moisture data for a variety of grain crops—critical information for all precision agriculture operations. Accurate yield data can help you perform analyses to prepare for the following year and is invaluable for decision making on your farm.



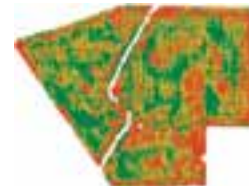
### In-Field Yield Monitoring

- ✓ Accurately view, map, and record crop yield and moisture data in real-time to instantly understand how well your crop performed.
- ✓ Variety tracking: Map and compare the performance of different seed varieties throughout your field.
- ✓ Moisture tracking: Determine if grain needs to be stored or dried based on the in-field moisture content.
- ✓ Load tracking: Record the amount of grain harvested and loaded onto your trucks.
- ✓ Auto-cut width: Adjust the cut width automatically when traveling over odd-shaped fields, point rows, or other previously harvested areas to avoid inaccurate area and yield calculations.
- ✓ Flexible Installation Options: Install yield monitoring on a wide range of combines, based on your set up and needs.



### In-Office Yield Analysis

Think of your yield map as an assessment of your crop. You can import your yield map into Farm Works Software® to view and assess the performance of your fields.



- ✓ Use actual load ticket data to reconcile yield maps with recorded weights to create the most accurate yield map for analyses
- ✓ Identify areas of high or low performance to help plan next year's crop
- ✓ Determine the best seed variety for your farm
- ✓ Generate yield reports and compare cost/profit per acre

### Planning

- ✓ Apply the results of your yield analysis to develop a plan for next year's field operations
- ✓ Create prescription maps for variable rate application of seed, chemicals, and/or fertilizer
- ✓ Budget seed, chemical, and/or fertilizer costs for the next year
- ✓ Layer topographic maps with your yield map to correlate potential water management issues with your field



# Software Systems For All Your Precision Farming Needs!

In your office or out in the field, H&R Agri-Power has the software solutions you need to keep important information at your fingertips and operations under control. Solutions include basic software designed to help make bottom line improvements, to advanced systems with powerful analysis tools for managing information for multiple operations.

H&R Agri-Power will help you select from a variety of products that can be integrated and customized to provide a complete information management solution for your farm.

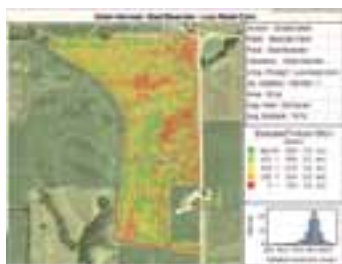


**Ag Leader**  
Technology



## AFS DESKTOP SOFTWARE

Offers the flexibility and analysis power to support all your precision farming needs. Generate yield maps, as-applied maps, prescription maps and more from a single, integrated software package. Plus, create soil sampling maps, create and print reports and import satellite imagery. No matter your data source – you can easily import and manage the data using your AFS desktop software. The software supports all of the major precision farming systems on the market.



- ✓ Achieves greater in-field efficiency by allowing you to create setup cards for all your Case IH AFS equipment as well as most other major brands.
- ✓ Makes it easy to import and export reference and analysis data in a variety of file formats
- ✓ Helps you learn more about your fields and your yields by simply overlaying multiple layers of data on the same maps.
- ✓ Makes regulatory record keeping fast and easy. Designed to keep track of and organizes all the relevant information for regulated applications.
- ✓ Provides spatial sorting of data by field or farm to ensure your data is properly organized.
- ✓ Allows you to examine specific areas of your field to help you diagnose problems or determine how to get more out of your land.

## VOICES FROM THE FIELD

"For Precision Ag on our farm we wanted an entire system approach. A system that would keep track of yields and soil samples, give us the ability to analyze data, write application prescriptions from that data and give us reliable hardware to apply prescriptions. H&R Agri-Power provided the complete solution. The system has been very effective at collecting yield data. The insights have allowed us to use variable rate control on NH<sub>3</sub>, Dry Fertilize, Lime, and Seed. The glue that sticks the parts together is the SMS software package. SMS allows me to manage all data aspects simply and effectively."

**Jamye Tosh, Tosh Farms**







# H&R Agri-Power is Your #1 Resource for Training & Support

**A**s a Case IH AFS Certified Dealer, H&R Agri-Power is dedicated to making precision farming easy, accessible and affordable for everyone. Our AFS certified sales and support specialists are committed to helping you every step of the way, which includes training on new equipment and keeping you up to date on changes. We offer ongoing training through the AFS Academy and 24/7/365 access to service and support through the AFS Support Center.

## AFS ACADEMY

H&R Agri-Power offers you three unique ways to get practical training for optimizing AFS products on your farm: Web-based classes; instructor-led training at H&R Agri-Power; and intensive three-day, regional, instructor-led training sessions.



### Web-based Training

Customers can access training through the AFS Academy web portal. Here, you can explore the training catalog, watch tutorials and videos, enroll in complete web-based courses, download informational documents and guides, and more. The AFS Academy Customer Training Catalog showcases the courses available, both web-based and instructor-led.

### H&R Agri-Power Instructor-led Training

H&R Agri-Power hosts instructor-led training sessions for customers on-site. These classes are scheduled to last no more than five hours. Contact your local H&R Agri-Power dealer for more information on these sessions or to see if a session will be held near you.

### Regional Instructor-led Training Sessions

Regional training sessions are planned for customers in 2013. Each event will last three days and will cover different course material.

*Please contact your H&R Agri-Power AFS specialist for more information and a complete training schedule.*



## AFS SUPPORT CENTER

The AFS Support Center provides 24/7/365 access to service and support for all of your AFS products, while also coordinating with H&R Agri-Power. It's a one-stop shop for all your AFS needs. You'll talk with an AFS support engineer who is 100 percent dedicated to keeping you rolling in the field.

*For all the training available contact your local Advanced Farming Specialist.*



# Growing To Serve Your Needs *Since 1959*

For over 50 years, H&R Agri-Power has been faithfully serving the equipment, parts and service needs of local farmers. Now, with the combined resources of thirteen locations across Kentucky, Illinois, Tennessee and Alabama, we're proud to be able to give more farmers the power to do more.

## VERGENNES, IL

5413 Elkhville Rd  
Vergennes, IL 62994  
**618-684-4818**

## HOPKINSVILLE, KY

4900 Eagle Way  
Hopkinsville, KY 42241  
**270-886-3918**

## OWENSBORO, KY

7274 US HWY 431  
Owensboro, KY 42301  
**270-926-2627**

## RUSSELLVILLE, KY

1700 Nashville Rd  
Russellville, KY 42276  
**270-726-4545**

## MORGANFIELD, KY

1464 US HWY 60W  
Morganfield, KY 42437  
**270-389-1424**

## MAYFIELD, KY

843 East Broadway  
Mayfield, KY 42066  
**270-247-4747**

## LAWRENCEBURG, TN

1003 Buffalo Rd,  
Lawrenceburg, TN 38464  
**931-762-2568**

## FAYETTEVILLE, TN

11 Highland Rim Rd  
Fayetteville, TN 37334  
**931-433-3516**

## BROWNSVILLE, TN

1341 Dupree Ave.  
Brownsville, TN 38012  
**731-772-0551**

## SOMERVILLE, TN

17760 US Hwy 64  
Somerville, TN 38068  
**901-465-3573**

## UNION CITY, TN

1299 N Highway 51 S  
Union City, TN 38261  
**731-885-1440**

## TANNER, AL

7809 US Highway 31 South  
Tanner, AL 35671  
**256-232-9115**



# H&R AGRI-POWER

THE POWER TO GET YOU MORE





[www.hragripower.com](http://www.hragripower.com)

# Your Online Resource For Precision Farming!

- ✓ The Latest Advancements in Precision Farming
- ✓ Monthly Service and Parts Specials
- ✓ Used Equipment, Pictures, Descriptions & Prices
- ✓ New Product Information
- ✓ Financing Specials
- ✓ Live Weather Forecasts
- ✓ Live Ticker – The Chicago Board of Trade
- ✓ DTN AG News Updates
- ✓ Career Opportunities



## WE VALUE YOUR FEEDBACK!

*We want to make hragripower.com your one source for everything Ag. If there's anything you'd like to see or couldn't find on the site, please let us know. We welcome any and all comments or suggestions.*

**W**e hope you'll find hragripower.com to be an informative and easy-to-use resource for precision farming and everything else you need to help keep your equipment and your business running at peak productivity. Visit the website today and please encourage your friends and colleagues to do the same.

[www.hragripower.com](http://www.hragripower.com)

# H&R AGRI-POWER

THE **POWER** TO GET YOU **MORE**

**CASE IH**  
AGRICULTURE



# H&R AGRI-POWER

THE **POWER** TO GET YOU **MORE**



**APPLICATION SOLUTIONS**



**TILLAGE SOLUTIONS**

## Every Season, Every Solution

**H&R AGRI-POWER GIVES YOU THE POWER  
TO DO MORE WITH PRECISION FARMING!**



**PLANTING SOLUTIONS**



**HARVEST SOLUTIONS**

